

# Firmware Upgrade Instructions

OEM615 | OEM617 | OEM617D | OEM628

*These instructions assume you are using a SIGNATURE auth code in your OEM6. This can be verified by using the LOG AUTHCODES command to see if you have SIGNATURE TRUE showing for your currently installed model(s).*

```
#AUTHCODESA,COM1,0,80.5,UNKNOWN,0,10.775,004C0000,2AD2,12143;VALID,2,SIGNATURE.TRUE,"63F3K8,MX  
43GD,T4BJ2X,924RRB,BZRWB,T,D2SB0G550",STANDARD.TRUE,"CJ43M9,2RNDBH,F3PDK8,N88F44,8JMCK9,D2SB  
0G550"*6F778E32
```

## Using NovAtel Firmware

1. Download, unpack, and install the firmware from NovAtel.
2. Run Winload - usually installs to Programs -> NovAtel Inc -> Vers#
3. On the File Menu, select Open File (Figure 1)

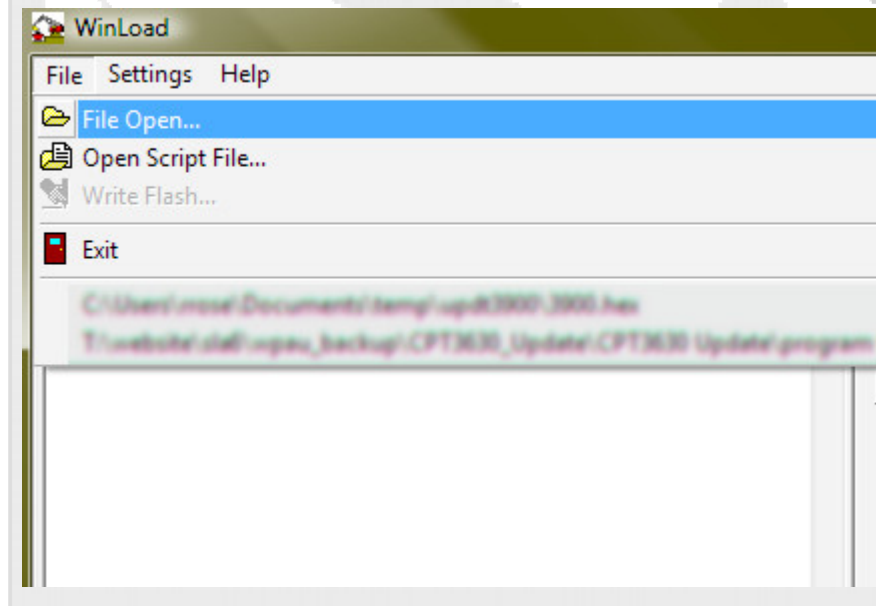


Figure 1

4. Navigate to the firmware .shex file, select the correct shex file, and Click Open (or double-click on the shex file) (Figure 2)

SLAinc.com  
GPS • GNSS Systems

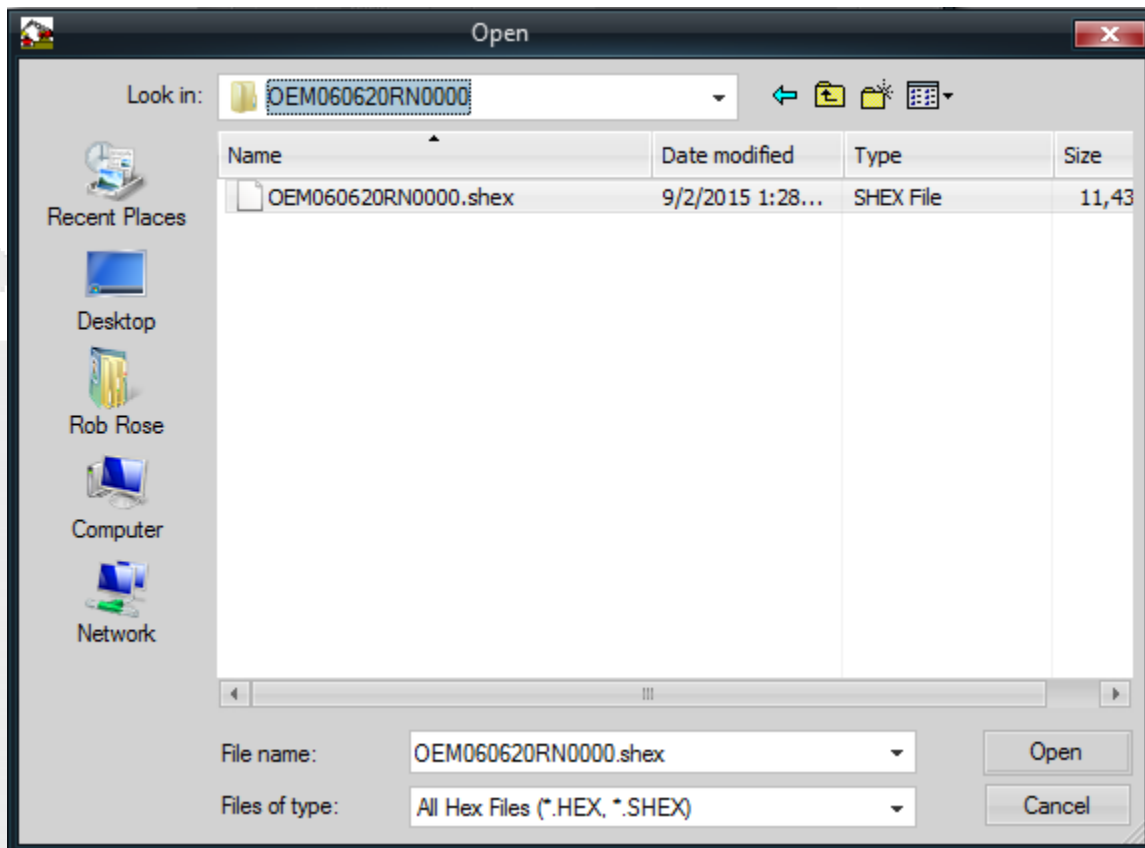


Figure 2

5. Make sure power is NOT connected to GPS receiver, but have power ready to connect
6. Click on Write Flash button in the Winload program (Figure 3)

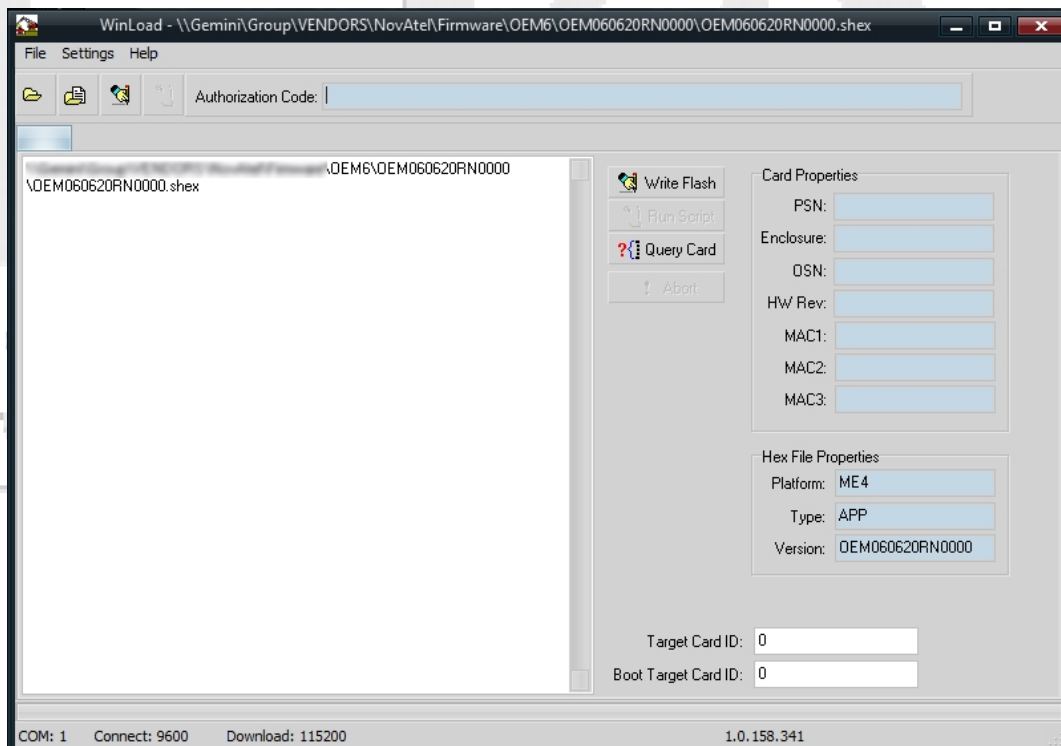


Figure 3

7. When the countdown starts - Apply power to receiver
8. The Winload program should use the SIGNATURE auth already installed in the receiver.
  1. If you get prompted for an auth code --> Cancel the firmware upgrade and contact SLAinc
  2. Firmware update should take approximately a few minutes to complete

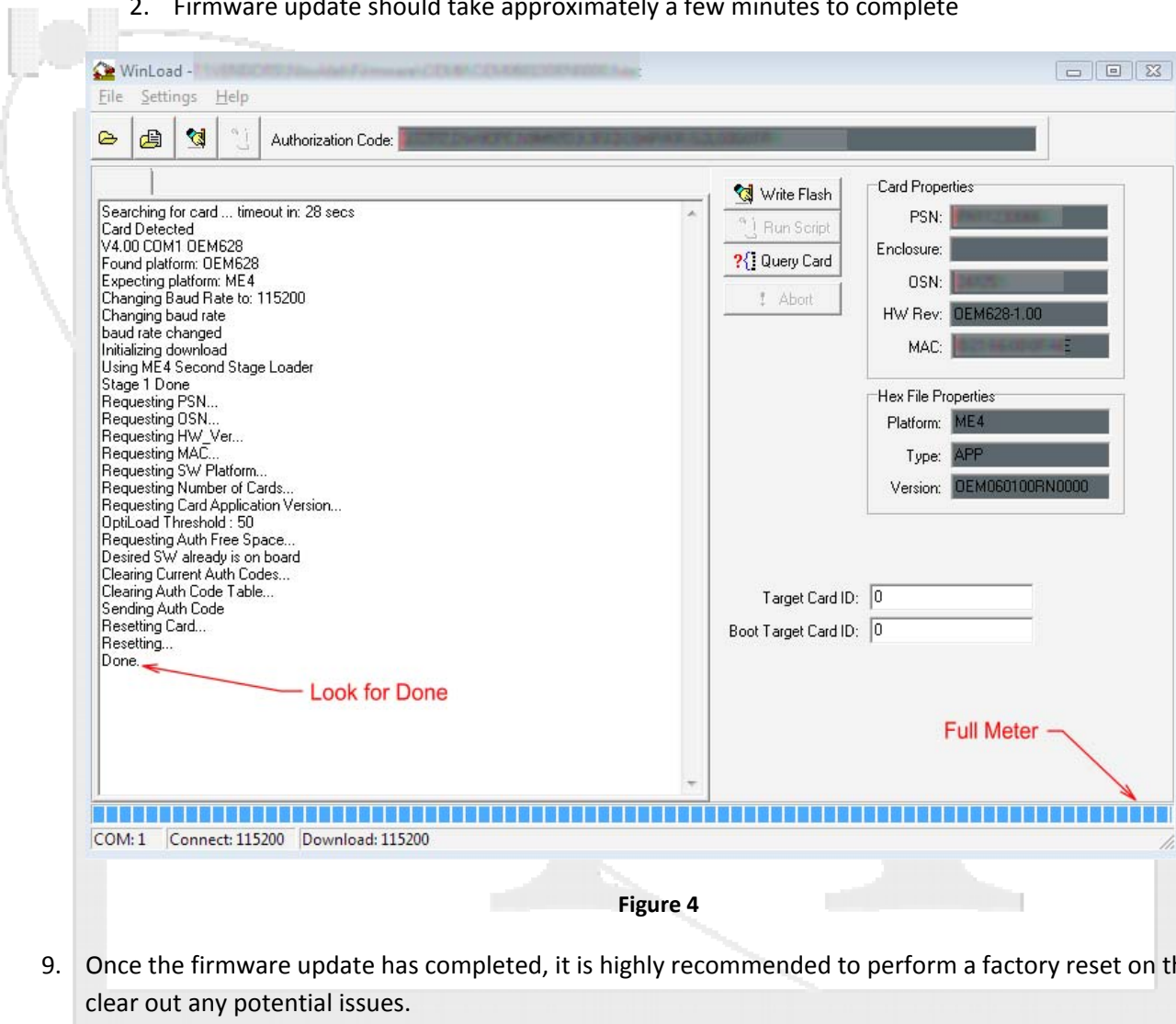


Figure 4

9. Once the firmware update has completed, it is highly recommended to perform a factory reset on the unit to clear out any potential issues.
  - a. Connect to the unit through NovAtel CDU/Connect or a terminal program (ex. HyperTerminal, Terra Term, Procomm, etc) and issue the following command:
    - i. FRESET [Enter]
  - b. The unit will reset to factory defaults. If connected at a baud rate other than 9600, you will have to reconnect at 9600
10. Configure your receiver as needed